

RS	DEZ 23	JAN	FEV	MAR	ABR	MAI	JUN	JUL	AGO	SET	OUT	NOV	DEZ	MAR/FEV	2024	2023	VAR %	MAR/MAR
A) Autos	8.879	6.169	6.071	7.548										VAR %	Acum	Acum	Acum	VAR %
B) Comi Leves	2.439	1.791	1.608	1.964										24,33%	19.788	17.454	13,37%	4,83%
Subtotal (A+B)	11.318	7.960	7.679	9.512	0	0	0	0	0	0	0	0	0	22,14%	5.363	4.430	21,06%	-4,66%
Caminhões	811	665	554	634										14,44%	1.853	2.079	-10,87%	-24,61%
Ônibus	76	55	56	73										30,36%	184	301	-38,87%	-38,66%
Motos	2.821	2.840	2.769	3.084										11,38%	8.693	7.924	9,70%	-8,70%
Impl. Rodov.	561	445	504	615										22,02%	1.564	1.155	35,41%	36,06%
Outros	877	761	660	701										6,21%	2.122	2.111	0,52%	-13,99%
Totais	16.464	12.726	12.222	14.619	0	0	0	0	0	0	0	0	0	19,61%	39.567	35.454	11,60%	-1,65%

EMPLACAMENTOS NO BRASIL EM 2024 - Okm

BRASIL	DEZ 23	JAN	FEV	MAR	ABR	MAI	JUN	JUL	AGO	SET	OUT	NOV	DEZ	MAR/FEV	2024	2023	VAR %	MAR/MAR
A) Autos	187.746	118.503	120.303	137.889										VAR %	Acum	Acum	Acum	VAR %
B) Comi Leves	48.844	33.553	34.967	38.093										14,62%	376.691	345.825	8,93%	-5,65%
Subtotal (A+B)	236.590	152.056	155.270	175.982	0	0	0	0	0	0	0	0	0	8,94%	106.612	90.929	17,25%	-5,72%
Caminhões	10.068	7.993	8.202	9.701										18,28%	25.897	27.437	-5,61%	3,36%
Ônibus	1.877	1.546	1.725	2.046										18,61%	5.317	7.378	-27,93%	-30,34%
Motos	132.752	143.326	136.292	152.670										12,02%	432.288	357.047	21,07%	4,61%
Impl. Rodov.	7.874	7.074	7.479	7.559										1,07%	22.115	20.892	5,85%	-9,89%
Outros	10.850	10.511	10.366	10.839										4,56%	31.713	29.249	8,42%	-7,91%
Totais	400.011	322.506	319.334	358.797	0	0	0	0	0	0	0	0	0	12,36%	1.000.633	878.757	13,87%	-1,69%

RANKING DE EMPLACAMENTOS DE OKM POR ESTADO EM 2024

ESTADO	JAN	FEV	MAR	ABR	MAI	JUN	JUL	AGO	SET	OUT	NOV	DEZ	ACUM. 2024	% Part
1º) São Paulo	79.735	80.238	94.862										254.837	25,5%
2º) Minas Gerais	35.728	41.337	43.776										120.840	12,1%
3º) Rio de Janeiro	19.912	17.455	20.406										57.773	5,8%
4º) Paraná	19.108	18.355	19.572										57.035	5,7%
5º) Bahia	16.057	14.946	17.643										48.646	4,9%
6º) Santa Catarina	14.960	15.704	17.825										48.489	4,8%
7º) Goiás	13.143	13.241	14.936										41.320	4,1%
8º) R S	12.726	12.222	14.619	0	0	0	0	0	0	0	0	0	39.567	4,0%
9º) Pernambuco	13.510	12.136	13.367										39.013	3,9%
10º) Ceará	9.577	7.706	9.452										26.735	2,7%
Totais	322.506	319.334	358.797	0	0	0	0	0	0	0	0	0	1.000.633	100,0%

EMPLACAMENTO NOS MUNICÍPIOS POR SEGMENTO

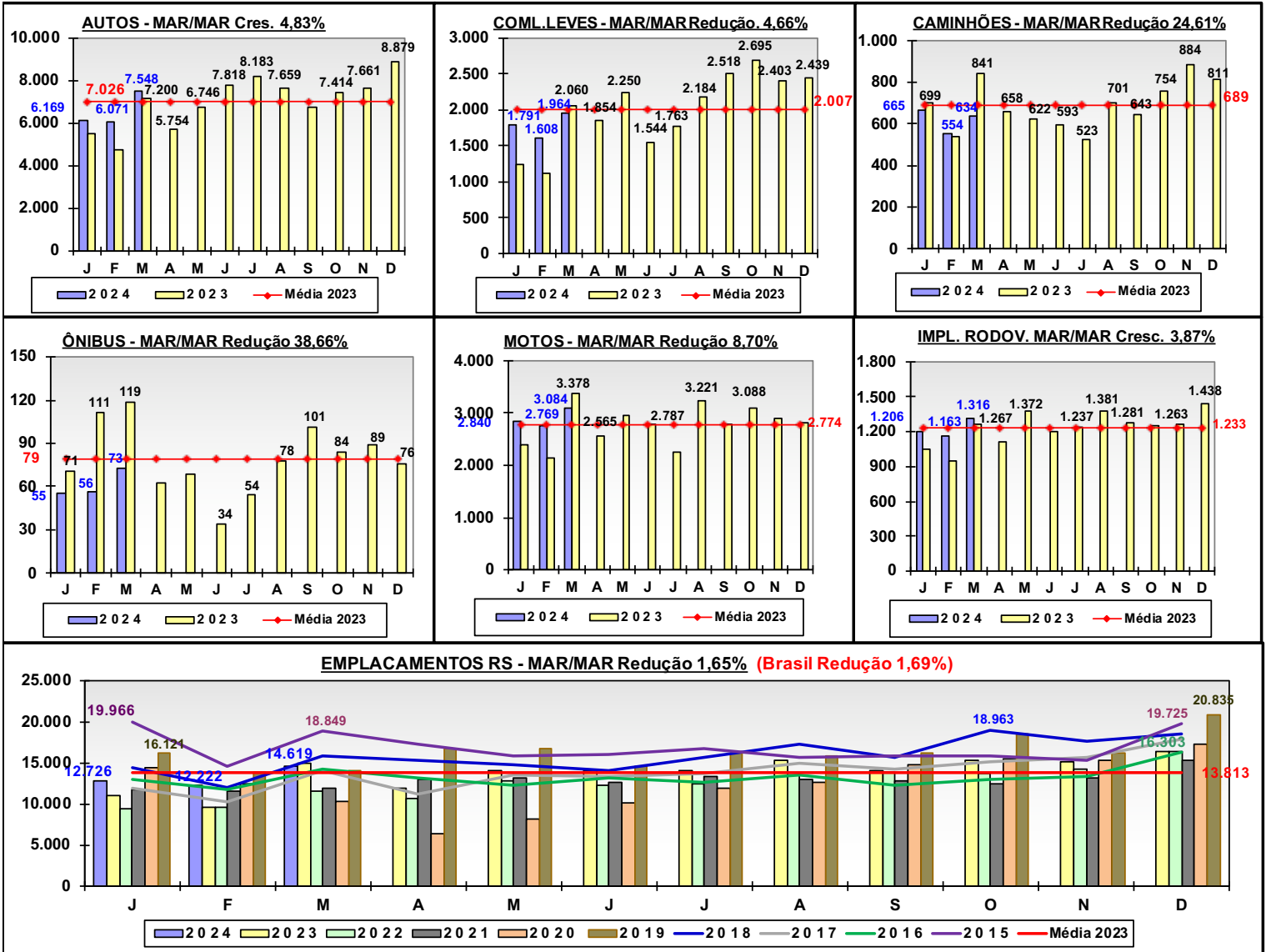
AUTOS	Quant.	Part. %
Porto Alegre	2.077	27,52%
Caxias do Sul	426	5,64%
Canoas	306	4,05%
Pelotas	264	3,50%
Passo Fundo	229	3,03%
Santa Maria	218	2,89%
N. Hamburgo	197	2,61%
B. Gonçalves	182	2,41%
Gravatá	161	2,13%
São Leopoldo	128	1,70%

Comi Leve	Quant.	Part. %
Porto Alegre	183	9,32%
Passo Fundo	99	5,04%
Caxias do Sul	92	4,68%
Santa Maria	57	2,90%
Pelotas	54	2,75%
São Leopoldo	39	1,99%
Canoas	37	1,88%
N. Hamburgo	36	1,83%
Erechim	33	1,68%
Ijuí	31	1,58%

Caminhões	Quant.	Part. %
São Leopoldo	76	11,99%
Erechim	65	10,25%
Porto Alegre	56	8,83%
Vacaria	33	5,21%
Caxias do Sul	13	2,05%
Passo Fundo	12	1,89%
Canoas	11	1,74%
Eldorado Sul	11	1,74%
Estrela	11	1,74%
Pelotas	11	1,74%

MOTOS	Quant.	Part. %
Porto Alegre	471	15,27%
Caxias do Sul	166	5,38%
Canoas	153	4,96%
Passo Fundo	147	4,77%
Viamão	97	3,15%
Gravatá	92	2,98%
Pelotas	78	2,53%
São Leopoldo	64	2,08%
Alvorada	57	1,85%
B. Gonçalves	54	1,75%

ÔNIBUS	Quant.	Part. %
Porto Alegre	14	19,18%
Santa Maria	6	8,22%
Canoas	5	6,88%
Gravatá	4	5,48%
Caxias do Sul	3	4,11%
Estio	3	4,11%
Benjamin Constant	2	2,74%
Farroupilha	2	2,74%
Parobé	2	2,74%
S. Livramento	2	2,74%



Fonte: FENABRAVE

COMPARATIVO EMPLACAMENTOS RS E SC - Okm

MAR 24

RS	2011	2012	2013	2014	2015	2016	2017	2018	2019	2020	2021	2022	2023
A) Autos	168.961	191.691	190.389	161.444	128.179	99.217	107.221	121.128	121.260	87.142	77.002	74.851	84.312
B) Coml Leves	46.748	51.028	57.535	59.208	22.959	20.193	21.389	23.683	23.863	17.946	20.932	18.383	24.081
Subtotal A+B	215.709	242.719	247.924	220.652	151.138	119.410	128.610	144.811	145.123	105.088	97.934	93.234	108.396
Caminhões	11.863	9.434	12.020	9.854	5.203	3.665	3.641	5.410	7.443	6.516	10.560	10.483	8.268
Ônibus	1.823	1.590	1.793	1.566	1.127	841	578	841	1.112	712	739	891	948
Motos	63.600	54.987	46.026	39.606	31.716	23.628	22.301	27.179	29.491	23.810	30.240	32.697	33.294
Impl. Rodov.	3.847	3.436	5.644	4.649	2.465	1.805	1.818	2.730	4.149	4.180	5.277	4.566	6.066
Outros	8.628	9.359	9.709	10.146	9.884	9.383	9.229	9.151	8.735	8.853	9.441	8.645	8.790
Totais RS	305.470	321.525	323.116	286.473	201.533	158.732	166.175	190.122	196.053	149.159	154.191	150.516	165.762
VAR %		5,26%	0,49%	-11,34%	-29,65%	-21,24%	4,69%	14,41%	3,12%	-23,92%	3,38%	-2,38%	10,13%

2024	2024	%
RS	SC	
19.788	20.931	-5,78%
5.363	5.436	-1,36%
25.151	26.367	-4,83%
1.853	2.176	-17,43%
184	187	-1,63%
8.693	14.458	-66,32%
1.564	2.374	-51,79%
2.122	2.927	-37,94%
39.567	48.489	-22,55%

SC	2011	2012	2013	2014	2015	2016	2017	2018	2019	2020	2021	2022	2023
(*) Parcial	212.267 *	236.318 *	232.403 *	224.217 *	178.745	143.950	156.848	186.020	200.085	164.632	171.652	164.935	184.840
Totais SC	212.267 *	236.318 *	232.403 *	224.217 *	178.745	143.950	156.848	186.020	200.085	164.632	171.652	164.935	184.840
VAR %		11,33%	-1,66%	-3,52%	-20,28%	-19,47%	8,96%	18,60%	7,56%	-172,72%	4,27%	-3,91%	11,46%

2024	2023	%
Acum.	Acum.	Cresc.
48.489	41.111	17,95%
39.567	35.454	11,60%
-22,55%	-15,96%	

COMPARATIVO	2011	2012	2013	2014	2015	2016	2017	2018	2019	2020	2021	2022	2023
(*) Parcial	212.267 *	236.318 *	232.403 *	224.217 *	178.745	143.950	156.848	186.020	200.085	164.632	171.652	164.935	183.840
SC	212.267 *	236.318 *	232.403 *	224.217 *	178.745	143.950	156.848	186.020	200.085	164.632	171.652	164.935	183.840
RS	305.470	321.525	323.116	286.473	201.533	158.732	166.175	190.122	196.053	149.159	154.191	150.416	165.762
VAR %	30,51%	26,50%	28,07%	21,73%	11,31%	9,31%	5,61%	2,18%	-2,06%	-10,37%	-11,32%	-9,58%	-9,83%

