

RS	DEZ 21	JAN	FEV	MAR	ABR	MAI	JUN	JUL	AGO	SET	OUT	NOV	DEZ	OUT/SET	2022	2021	VAR %	OUT/OUT
A) Autos	7.808	4.663	4.705	5.397	5.134	6.423	5.936	6.461	6.895	6.794	6.614			VAR %	Acum	Acum	Acum	VAR %
B) Coml Leves	2.113	1.241	1.238	1.211	1.149	1.343	1.273	1.570	1.609	1.964	2.011			-2,65%	59.019	62.790	-6,01%	9,23%
Subtotal (A+B)	9.921	5.904	5.943	6.608	6.283	7.766	7.209	8.031	8.504	8.758	8.625	0	0	-1,52%	73.635	80.012	-7,97%	13,50%
Caminhões	1.158	642	762	800	822	816	904	922	992	923	927			0,43%	8.510	8.540	-0,35%	-1,17%
Ônibus	102	54	52	65	71	64	63	43	72	94	78			-17,02%	649	546	18,86%	-14,29%
Motos	2.929	1.896	1.833	2.963	2.661	3.128	3.019	2.369	2.765	2.917	2.971			1,85%	26.520	24.289	9,19%	15,07%
Impl. Rodov.	449	377	350	375	308	298	323	365	478	395	353			-10,63%	3.622	4.438	-18,39%	-10,86%
Outros	826	547	632	725	598	667	699	712	794	780	796			2,05%	6.949	7.812	-11,05%	-1,61%
Totais	15.385	9.420	9.572	11.536	10.743	12.739	12.217	12.442	13.605	13.867	13.750	0	0	-0,84%	119.885	125.637	-4,58%	10,75%

EMPLACAMENTOS NO BRASIL EM 2022 - Okm

BRASIL	DEZ 21	JAN	FEV	MAR	ABR	MAI	JUN	JUL	AGO	SET	OUT	NOV	DEZ	OUT/SET	2022	2021	VAR %	OUT/OUT
A) Autos	156.132	92.205	100.006	108.230	109.687	139.465	133.577	135.518	155.202	143.208	137.003			VAR %	Acum	Acum	Acum	VAR %
B) Coml Leves	37.409	24.389	23.029	26.658	26.653	35.487	31.878	33.570	39.047	37.214	31.471			-15,43%	1.254.058	1.275.859	-1,71%	14,84%
Subtotal (A+B)	193.541	116.594	123.035	134.888	136.340	174.952	165.455	169.088	194.249	180.422	168.474	0	0	-6,62%	1.563.619	1.619.866	-3,47%	12,28%
Caminhões	11.985	8.515	8.112	10.133	9.375	10.318	10.861	11.326	12.297	11.091	10.582			-4,59%	102.593	104.769	-2,08%	-4,39%
Ônibus	1.536	1.368	1.176	1.779	1.521	1.792	1.731	1.561	2.050	2.437	1.828			-24,99%	17.064	14.841	14,98%	52,84%
Motos	112.401	89.679	75.004	110.080	107.728	133.372	120.867	107.614	118.550	123.640	120.251			-2,74%	1.106.733	938.414	17,94%	23,96%
Impl. Rodov.	8.154	6.726	6.003	6.796	6.572	7.233	6.939	7.303	7.776	7.357	6.349			-13,70%	69.053	75.237	-8,22%	-8,52%
Outros	9.987	7.888	8.665	9.915	9.013	10.785	10.100	10.802	11.688	10.352	9.335			-9,82%	98.538	110.025	-10,44%	-3,77%
Totais	337.604	230.770	221.995	273.591	270.549	338.452	315.953	307.694	346.610	335.299	316.819	0	0	-5,51%	2.957.600	2.863.152	3,30%	14,80%

RANKING DE EMPLACAMENTOS DE OKM POR ESTADO EM 2022

ESTADO	JAN	FEV	MAR	ABR	MAI	JUN	JUL	AGO	SET	OUT	NOV	DEZ	ACUM. 2022	% Part
1) São Paulo	53.189	45.045	63.357	62.425	84.319	75.315	72.711	80.123	78.503	72.021			687.001	23,2%
2) Minas Gerais	32.742	36.626	41.184	44.235	58.078	54.966	55.363	67.454	61.203	57.452			509.294	17,2%
3) Paraná	14.850	14.001	15.606	15.143	18.337	18.389	17.195	20.415	19.376	20.021			173.322	5,9%
4) Rio de Janeiro	14.609	13.112	13.735	13.986	16.851	15.953	18.751	18.061	16.325	15.762			157.141	5,3%
5) Bahia	11.035	10.712	13.208	12.370	15.274	13.741	14.169	15.059	15.321	14.824			135.712	4,6%
6) Santa Catarina	10.633	11.303	13.697	12.870	14.609	13.529	11.977	14.868	15.019	14.048			134.087	4,5%
7) Goiás	9.335	10.013	11.961	11.921	13.648	14.229	11.977	14.671	13.462	11.853			123.059	4,2%
8) RS	9.420	9.572	11.536	10.743	12.739	12.217	12.442	13.605	13.867	13.750			119.885	4,1%
9) Pernambuco	9.083	8.176	9.781	10.050	11.826	10.631	10.790	11.751	11.547	11.137			104.765	3,5%
10) Ceará	7.522	7.622	8.042	8.386	10.319	9.425	8.263	9.161	9.530	8.803			87.072	2,9%
Totais	230.770	221.995	273.591	270.549	338.452	315.953	307.694	346.610	335.299	316.819	0	0	2.957.600	100,0%

EMPLACAMENTO NOS MUNICÍPIOS POR SEGMENTO

OCTUBRO 22

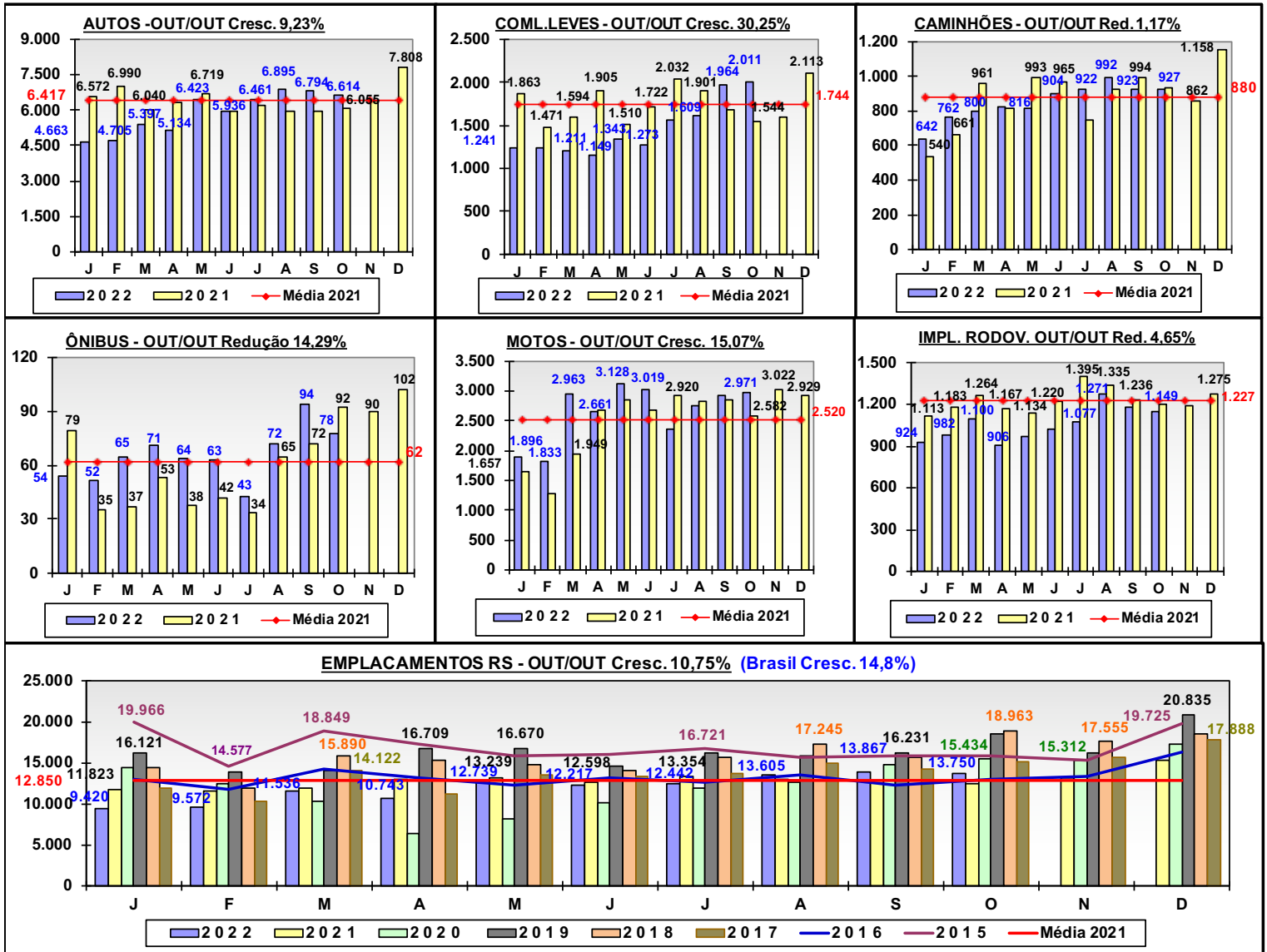
AUTOS	Quant.	Part. %
Porto Alegre	1.760	26,61%
Caxias do Sul	406	6,14%
Canoas	238	3,60%
Novo Hamburgo	201	3,04%
Pelotas	195	2,95%
Santa Maria	191	2,89%
Passo Fundo	175	2,65%
Rio Grande	129	1,95%
São Leopoldo	127	1,92%
Sta Cruz do Sul	113	1,71%

Coml Leve	Quant.	Part. %
Porto Alegre	292	14,52%
Sta Cruz Sul	100	4,97%
Guaíba	64	3,18%
Caxias do Sul	60	2,98%
Santa Maria	53	2,64%
Passo Fundo	49	2,44%
Lajeado	40	1,99%
Pelotas	36	1,79%
São Leopoldo	36	1,79%
B. Gonçalves	29	1,44%

Caminhões	Quant.	Part. %
São Leopoldo	228	24,60%
Canoas	58	6,26%
Ijuí	41	4,42%
Garibaldi	33	3,56%
Porto Alegre	25	2,70%
Estrela	21	2,27%
N. Santa Rita	20	2,16%
Erechim	18	1,94%
Caxias do Sul	17	1,83%
Passo Fundo	17	1,83%

MOTOS	Quant.	Part. %
Porto Alegre	490	16,49%
Caxias do Sul	145	4,88%
Passo Fundo	126	4,24%
Canoas	105	3,53%
Pelotas	92	3,10%
Viamão	77	2,59%
N. Hamburgo	75	2,52%
Santa Maria	72	2,42%
Gavataí	62	2,09%
Sta Cruz Sul	58	1,95%

ÔNIBUS	Quant.	Part. %
Caxias do Sul	10	12,82%
Porto Alegre	5	6,41%
Canoas	4	5,13%
Gramado	3	3,85%
Acegua	2	2,56%
Alegrete	2	2,56%
Não-Me-Toque	2	2,56%
Pinheiro Machado	2	2,56%
Rio Grande	2	2,56%
Triunfo	2	2,56%



Fonte: FENABRAVE

RS	2011	2012	2013	2014	2015	2016	2017	2018	2019	2020	2021
A) Autos	168.961	191.691	190.389	161.444	128.179	99.217	107.221	121.128	121.260	87.142	77.002
B) Coml Leves	46.748	51.028	57.535	59.208	22.959	20.193	21.389	23.683	23.863	17.946	20.932
Subtotal A+B	215.709	242.719	247.924	220.652	151.138	119.410	128.610	144.811	145.123	105.088	97.934
Caminhões	11.863	9.434	12.020	9.854	5.203	3.665	3.641	5.410	7.443	6.516	10.560
Ônibus	1.823	1.590	1.793	1.566	1.127	841	578	841	1.112	712	739
Motos	63.600	54.987	46.026	39.606	31.716	23.628	22.301	27.179	29.491	23.810	30.240
Impl. Rodov.	3.847	3.436	5.644	4.649	2.465	1.805	1.816	2.730	4.149	4.180	5.277
Outros	8.628	9.359	9.709	10.146	9.884	9.383	9.229	9.151	8.735	8.853	9.441
Totais RS	305.470	321.525	323.116	286.473	201.533	158.732	166.175	190.122	196.053	149.159	154.191
VAR %		5,26%	0,49%	-11,34%	-29,65%	-21,24%	4,69%	14,41%	3,12%	-23,92%	3,38%

2022	2022	%
RS	SC	
59.019	58.857	0,27%
14.616	12.192	16,58%
73.635	71.049	3,51%
8.510	8.845	-3,94%
649	811	-24,96%
26.520	36.228	-36,61%
3.622	7.854	-116,84%
6.949	9.300	-33,83%
119.885	134.087	-11,85%

SC	2011	2012	2013	2014	2015	2016	2017	2018	2019	2020	2021
(*) Parcial											
Totais SC	212.267 *	236.318 *	232.403 *	224.217 *	178.745	143.950	156.848	186.020	200.085	164.632	171.652
VAR %		11,33%	-1,66%	-3,52%	-20,28%	-19,47%	8,96%	18,60%	7,56%	-172,72%	4,27%

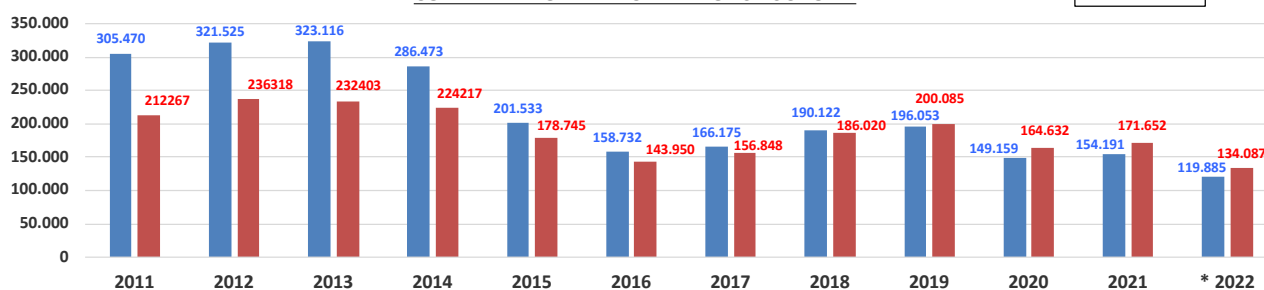
COMPARATIVO	2011	2012	2013	2014	2015	2016	2017	2018	2019	2020	2021
(*) Parcial											
SC	212.267 *	236.318 *	232.403 *	224.217 *	178.745	143.950	156.848	186.020	200.085	164.632	171.652
RS	305.470	321.525	323.116	286.473	201.533	158.732	166.175	190.122	196.053	149.159	154.191
VAR %	30,51%	26,50%	28,07%	21,73%	11,31%	9,31%	5,61%	2,16%	-2,06%	-10,37%	-11,32%

2022	2021	%
Acum.	Acum.	
134.087	140.601	-4,63%
119.885	125.637	-4,58%
-11,85%	-11,91%	

Emplacamento	2011	2012	2013	2014	2015	2016	2017	2018	2019	2020	2021
BRASIL	5.715.280	5.586.586	5.458.671	5.096.236	3.982.816	3.174.625	3.216.761	3.653.500	4.036.303	3.162.851	3.497.077
VAR %		-2,25%	-2,29%	-6,64%	-21,85%	-20,29%	1,33%	13,58%	10,48%	-21,63%	10,57%

2022	2021
2.957.600	2.863.152
3,30%	

COMPARATIVO EMPLACAMENTO RS E SC - Okm



EMPLACAMENTOS NO RIO GRANDE DO SUL EM 2022 - Okm

(QUANT. POR DIAS ÚTEIS)

RS	JAN	FEV	MAR	ABR	MAI	JUN	JUL	AGO	SET	OUT	NOV	DEZ
DIAS ÚTEIS	25	22	24	24	26	25	26	27	24	25		
A) Autos	186	214	225	214	247	238	249	255	283	265		
B) Coml Leves	50	56	50	48	52	51	60	60	82	80		
Subtotal A+B	236	270	275	262	299	289	309	315	365	345		
Caminhões	26	35	33	34	31	36	36	15	38	37		
Ônibus	2	2	3	3	3	3	2	3	4	3		
Motos	79	83	123	111	120	121	91	102	122	119		
Impl. Rodov.	15	16	16	13	11	13	14	18	16	14		
Outros	22	29	30	25	26	28	27	29	33	32		
EMPLACAMENTO	377	435	481	448	490	489	479	504	578	550		

EMPLACAMENTOS NO BRASIL EM 2022 - Okm

(QUANT. POR DIAS ÚTEIS)

BRASIL	JAN	FEV	MAR	ABR	MAI	JUN	JUL	AGO	SET	OUT	NOV	DEZ
DIAS ÚTEIS	25	22	24	24	26	25	26	27	24	25		
A) Autos	3.688	4.546	4.510	4.570	5.364	5.343	5.212	5.744	5.967	5.480		
B) Coml Leves	976	1.047	1.111	1.111	1.359	1.275	1.291	1.446	1.551	1.259		
Subtotal A+B	4.664	5.593	5.621	5.681	174.814	6.619	6.504	7.190	7.518	6.739		
Caminhões	341	369	422	391	397	434	436	456	462	423		
Ônibus	55	53	74	63	74	69	60	76	102	73		
Motos	3.587	3.409	4.587	4.489	5.130	4.835	4.139	4.391	5.152	120.251		
Impl. Rodov.	269	273	283	274	278	277	281	287	307	254		
Outros	316	394	413	376	415	404	415	433	431	373		
EMPLACAMENTO	9.231	10.091	11.400	11.273	13.017	12.639	11.835	12.834	13.971	12.673		