

RS	DEZ 23	JAN	FEV	MAR	ABR	MAI	JUN	JUL	AGO	SET	OUT	NOV	DEZ	ABR/MAR	2024	2023	VAR %	ABR/ABR
A) Autos	8.879	6.169	6.071	7.547	8.241									VAR %	Acum	Acum	Acum	VAR %
B) Coml Leves	2.439	1.791	1.608	1.964	2.329									9,20%	28.028	23.208	20,77%	43,22%
Subtotal (A+B)	11.318	7.960	7.679	9.511	10.570	0	0	0	0	0	0	0	0	18,58%	7.692	6.284	22,41%	25,62%
Caminhões	811	665	554	634	737									11,13%	35.720	29.492	21,12%	38,93%
Ônibus	76	55	56	73	66									16,25%	2.590	2.737	-5,37%	12,01%
Motos	2.821	2.840	2.769	3.084	3.351									-9,59%	250	363	-31,13%	6,45%
Impl. Rodov.	561	445	504	615	578									8,66%	12.044	10.489	14,83%	30,64%
Outros	877	761	660	701	733									-6,02%	2.142	1.633	31,17%	20,92%
Totais	16.464	12.726	12.222	14.618	16.035	0	0	0	0	0	0	0	0	4,56%	2.855	2.743	4,08%	15,98%
		-22,70%	-3,96%	19,60%	9,69%									9,69%	55.601	47.457	17,16%	33,59%

EMPLACAMENTOS NO BRASIL EM 2024 - Okm

BRASIL	DEZ 23	JAN	FEV	MAR	ABR	MAI	JUN	JUL	AGO	SET	OUT	NOV	DEZ	ABR/MAR	2024	2023	VAR %	ABR/ABR
A) Autos	187.746	118.503	120.303	137.882	164.365									VAR %	Acum	Acum	Acum	VAR %
B) Coml Leves	48.844	33.553	34.967	38.093	43.713									19,21%	541.047	463.936	16,62%	39,16%
Subtotal (A+B)	236.590	152.056	155.270	175.975	208.078	0	0	0	0	0	0	0	0	14,75%	150.323	124.517	20,72%	30,14%
Caminhões	10.068	7.993	8.202	9.694	10.553									18,24%	691.370	588.453	17,49%	37,17%
Ônibus	1.877	1.546	1.725	2.046	2.182									8,66%	36.443	34.726	4,94%	44,78%
Motos	132.752	143.326	136.292	152.667	170.252									6,65%	7.499	9.047	-17,11%	30,74%
Impl. Rodov.	7.874	7.074	7.479	7.559	8.019									11,52%	602.534	477.951	26,07%	40,82%
Outros	10.850	10.511	10.366	10.839	11.446									6,09%	30.134	27.099	11,20%	29,19%
Totais	400.011	322.506	319.334	358.780	410.530	0	0	0	0	0	0	0	0	5,60%	43.159	38.312	12,65%	26,29%
		-19,38%	-0,98%	12,35%	14,42%									14,42%	1.411.139	1.175.588	20,04%	38,30%

RANKING DE EMPLACAMENTOS DE OKM POR ESTADO EM 2024

ESTADO	JAN	FEV	MAR	ABR	MAI	JUN	JUL	AGO	SET	OUT	NOV	DEZ	ACUM. 2024	% Part
1) São Paulo	79.735	80.238	94.855	99.372									354.202	25,1%
2) Minas Gerais	35.728	41.337	43.776	59.263									180.102	12,8%
3) Rio de Janeiro	19.912	17.455	20.406	25.109									82.882	5,9%
4) Paraná	19.108	18.355	19.572	23.869									80.904	5,7%
5) Bahia	16.057	14.946	17.643	19.625									68.270	4,8%
6) Santa Catarina	14.960	15.704	17.823	18.402									66.889	4,7%
7) Goiás	13.143	13.241	14.933	17.119									58.435	4,1%
8) RS	12.726	12.222	14.618	16.035	0	0	0	0	0	0	0	0	55.601	3,9%
9) Pernambuco	13.510	12.136	13.367	16.515									55.628	3,9%
10) Ceará	9.577	7.706	9.452	7.746									34.481	2,4%
Totais	322.506	319.334	358.780	410.530	0	0	0	0	0	0	0	0	1.411.139	100,0%

EMPLACAMENTO NOS MUNICÍPIOS POR SEGMENTO

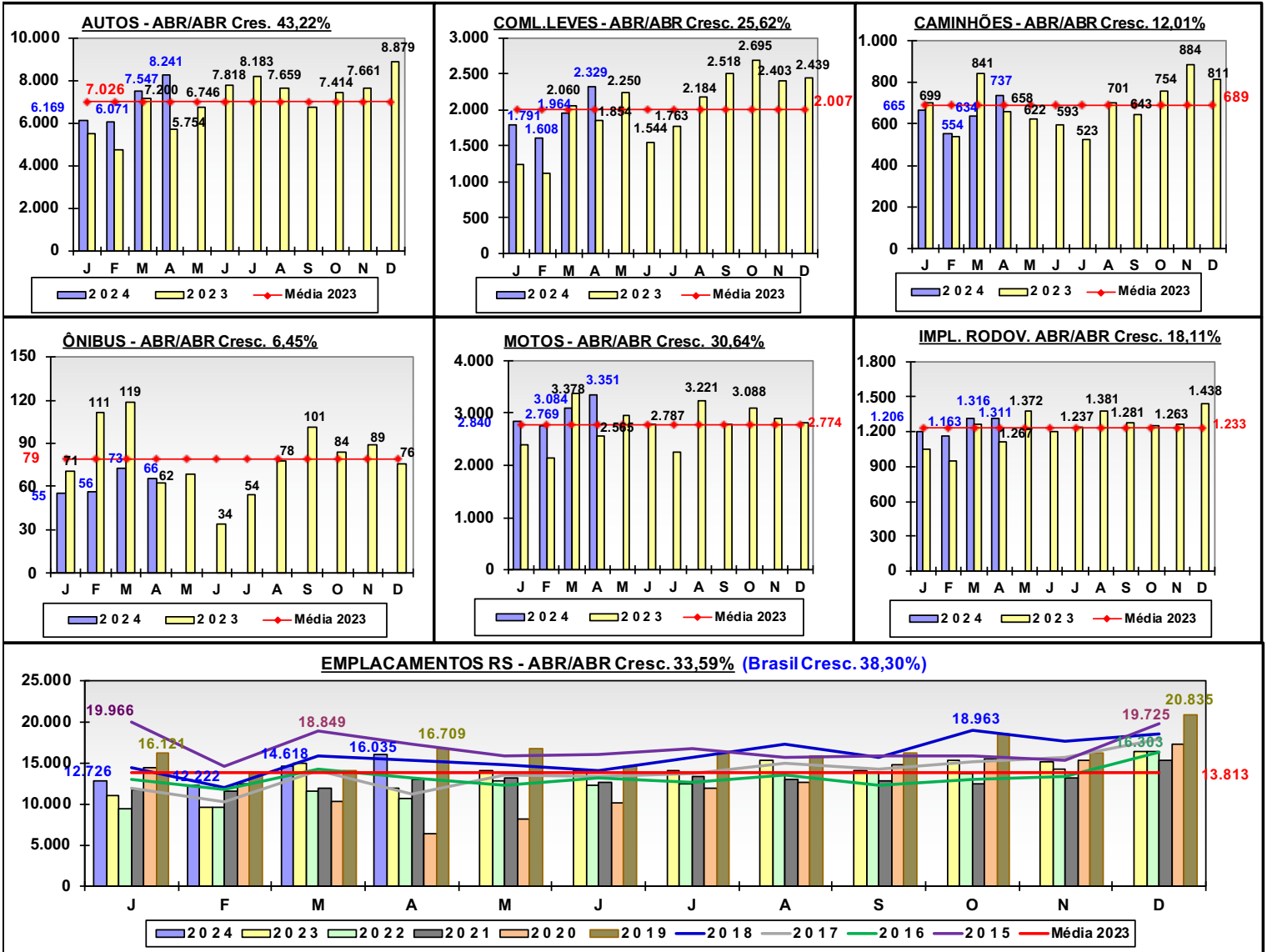
AUTOS	Quant.	Part. %
Porto Alegre	2.200	26,70%
Caxias do Sul	525	6,37%
Canoas	336	4,08%
Pelotas	262	3,18%
N. Hamburgo	249	3,02%
Passo fundo	229	2,78%
Santa Maria	219	2,66%
Gravatá	186	2,26%
Sta. Cruz do Sul	178	2,16%
São Leopoldo	162	1,97%

Coml Leve	Quant.	Part. %
Porto Alegre	236	10,13%
Caxias do Sul	93	3,99%
Passo Fundo	66	2,83%
Lajeado	61	2,62%
Santa Maria	56	2,40%
Ijuí	45	1,93%
Sta. Cruz Sul	45	1,93%
Pelotas	41	1,76%
Canoas	39	1,67%
Uruguaiana	34	1,46%

Caminhões	Quant.	Part. %
São Leopoldo	72	9,77%
Porto Alegre	47	6,38%
Estrela	42	5,70%
Portão	31	4,21%
Erechim	20	2,71%
Farroupilha	17	2,31%
Canoas	16	2,17%
Caxias do Sul	16	2,17%
Lajeado	16	2,17%
Três Cachoeiras	16	2,17%

MOTOS	Quant.	Part. %
Porto Alegre	533	15,91%
Caxias do Sul	186	5,55%
Canoas	180	5,37%
Passo Fundo	136	4,06%
Pelotas	90	2,69%
Bagé	87	2,60%
Viamão	83	2,48%
N. Hamburgo	79	2,36%
Gravatá	77	2,30%
Santa Maria	77	2,30%

ÔNIBUS	Quant.	Part. %
Porto Alegre	17	25,76%
Cachoeirinha	5	7,58%
Caxias do Sul	3	4,55%
Erechim	3	4,55%
Guaiíba	3	4,55%
Sta. Cruz do Sul	3	4,55%
Barra do Rio Azul	2	3,03%
Itaara	2	3,03%
Lajeado	2	3,03%
Passo Fundo	2	3,03%



Fonte: FENABRAVE

COMPARATIVO EMPLACAMENTOS RS E SC - Okm

ABR 24

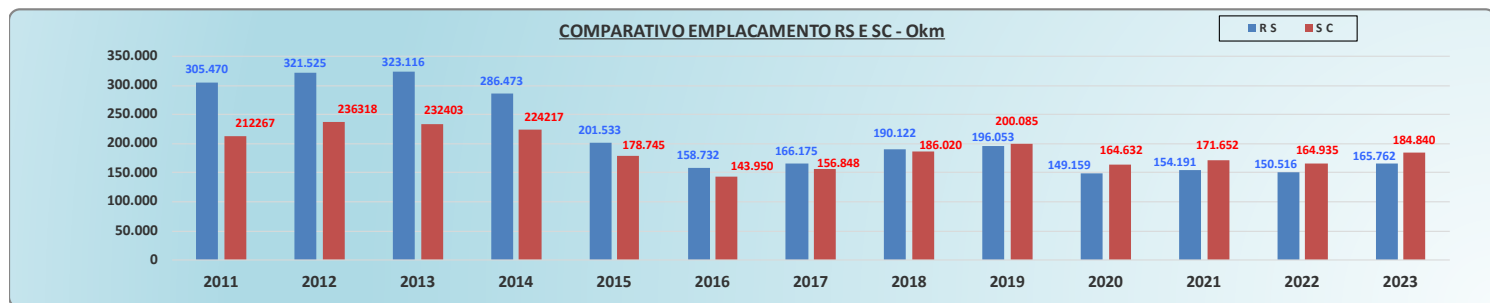
RS	2011	2012	2013	2014	2015	2016	2017	2018	2019	2020	2021	2022	2023
A) Autos	168.961	191.691	190.389	161.444	128.179	99.217	107.221	121.128	121.260	87.142	77.002	74.851	84.312
B) Coml Leves	46.748	51.028	57.535	59.208	22.959	20.193	21.389	23.683	23.863	17.946	20.932	18.383	24.081
Subtotal A+B	215.709	242.719	247.924	220.652	151.138	119.410	128.610	144.811	145.123	105.088	97.934	93.234	108.396
Caminhões	11.863	9.434	12.020	9.854	5.203	3.665	3.641	5.410	7.443	6.516	10.560	10.483	8.268
Ônibus	1.823	1.590	1.793	1.566	1.127	841	578	841	1.112	712	739	891	948
Motos	63.600	54.987	46.026	39.606	31.716	23.628	22.301	27.179	29.491	23.810	30.240	32.697	33.294
Impl. Rodov.	3.847	3.436	5.644	4.649	2.465	1.805	1.816	2.730	4.149	4.180	5.277	4.566	6.066
Outros	8.628	9.359	9.709	10.146	9.884	9.383	9.229	9.151	8.735	8.853	9.441	8.645	8.790
Totais RS	305.470	321.525	323.116	286.473	201.533	158.732	166.175	190.122	196.053	149.159	154.191	150.516	165.762
VAR %		5,26%	0,49%	-11,34%	-29,65%	-21,24%	4,69%	14,41%	3,12%	-23,92%	3,38%	-2,38%	10,13%

SC	2011	2012	2013	2014	2015	2016	2017	2018	2019	2020	2021	2022	2023
(*) Parcial	212.267 *	236.318 *	232.403 *	224.217 *	178.745	143.950	156.848	186.020	200.085	164.632	171.652	164.935	183.840
Totais SC	212.267 *	236.318 *	232.403 *	224.217 *	178.745	143.950	156.848	186.020	200.085	164.632	171.652	164.935	183.840
VAR %		11,33%	-1,66%	-3,52%	-20,28%	-19,47%	8,96%	18,60%	7,56%	-172,72%	4,27%	-3,91%	11,46%

COMPARATIVO (*) Parcial	2011	2012	2013	2014	2015	2016	2017	2018	2019	2020	2021	2022	2023
SC	212.267 *	236.318 *	232.403 *	224.217 *	178.745	143.950	156.848	186.020	200.085	164.632	171.652	164.935	183.840
RS	305.470	321.525	323.116	286.473	201.533	158.732	166.175	190.122	196.053	149.159	154.191	150.516	165.762
VAR %		30,51%	26,50%	28,07%	21,73%	11,31%	9,31%	5,61%	2,18%	-2,06%	-10,37%	-11,32%	-9,58%

2024	2024	%
RS	SC	
28.028	28.925	-3,20%
7.692	7.513	2,33%
35.720	36.438	-2,01%
2.590	3.051	-17,80%
250	257	-2,80%
12.044	19.940	-65,56%
2.142	3.271	-52,71%
2.855	3.932	-37,72%
55.601	66.889	-20,30%

2024	2023	%
Acum.	Acum.	Cresc.
66.889	54.619	22,46%
55.601	47.457	17,16%
-20,30%	-15,09%	



RANKING DE EMPLACAMENTOS DE OKM POR ESTADO

ESTADO	JAN	FEV	MAR	ABR	MAI	JUN	JUL	AGO	SET	OUT	NOV	DEZ	ACUM 2017	% Part
1º) São Paulo	51.722	49.947	69.929	56.182	64.928	64.725	63.556	74.442	69.557	71.004	69.065	73.299	778.382	24,2%
2º) Minas Gerais	27.398	29.483	42.585	36.443	50.023	51.326	42.043	52.067	50.540	48.094	48.051	39.697	517.628	16,1%
3º) Paraná	15.229	12.225	16.846	13.452	17.077	15.557	15.452	17.248	15.305	16.567	17.139	18.016	190.117	5,9%
4º) Rio de Janeiro	13.935	12.382	16.126	13.757	15.690	15.922	15.644	17.194	15.966	13.451	14.883	15.927	180.889	5,6%
5º) R S	11.978	10.258	14.122	11.231	13.567	13.411	13.631	15.016	14.159	15.221	15.676	17.890	166.175	5,2%
6º) Santa Catarina	11.624	10.165	13.903	10.630	12.819	12.406	12.549	14.321	12.993	14.355	14.437	16.644	156.848	4,9%
7º) Bahia	10.943	8.960	13.116	10.171	12.908	11.845	12.106	12.984	11.682	12.359	11.394	12.907	141.377	4,4%
8º) Pernambuco	7.822	4.443	6.948	11.653	10.525	9.301	9.205	10.731	9.241	10.033	9.287	9.884	109.074	3,4%
9º) Ceará	7.721	7.900	9.155	7.035	9.628	8.754	9.396	9.682	8.317	9.023	8.755	12.796	108.162	3,4%
10º) Goiás	7.805	6.931	9.302	7.635	9.204	9.467	8.550	10.199	8.622	8.839	8.380	9.816	104.748	3,3%
Total	224.138	204.933	282.613	230.837	285.757	277.185	265.967	305.264	276.116	282.355	280.417	301.258	3.216.761	100,0%

ESTADO	JAN	FEV	MAR	ABR	MAI	JUN	JUL	AGO	SET	OUT	NOV	DEZ	ACUM 2018	% Part
1º) São Paulo	65.485	59.212	76.362	76.657	74.344	65.754	74.323	88.089	76.036	87.561	78.361	82.854	905.035	24,8%
2º) Minas Gerais	33.571	32.045	44.100	49.482	39.276	55.835	52.071	59.332	52.644	67.249	57.162	43.912	586.639	16,1%
3º) Paraná	17.905	14.750	17.838	20.646	19.086	16.644	18.634	20.872	17.730	20.164	20.047	21.304	225.611	6,2%
4º) Rio de Janeiro	16.125	11.651	16.977	16.649	15.927	14.844	15.248	18.387	15.862	18.095	15.392	17.487	192.646	5,3%
5º) R S	14.438	11.999	15.890	15.311	14.841	14.052	15.712	17.245	15.635	18.963	17.555	18.471	190.122	5,2%
6º) Santa Catarina	13.663	12.642	16.402	16.227	14.309	13.980	14.903	16.994	14.320	16.950	16.618	19.010	186.020	5,1%
7º) Bahia	12.468	9.583	13.434	13.167	13.887	12.000	14.319	15.793	12.903	14.349	13.065	13.280	158.248	4,3%
8º) Goiás	9.105	8.259	9.920	10.523	10.568	10.202	10.165	11.611	9.500	10.481	10.613	10.599	121.535	3,3%
9º) Pernambuco	9.438	7.684	9.736	10.458	10.237	9.254	10.195	11.831	9.968	11.761	10.442	10.484	121.487	3,3%
10º) Ceará	8.195	7.565	9.061	9.920	10.174	8.882	9.665	10.629	9.126	10.155	9.974	12.874	116.120	3,2%
Total	269.079	230.044	298.626	311.165	294.945	287.705	306.708	352.411	299.612	351.741	320.397	331.153	3.653.500	100,0%

ESTADO	JAN	FEV	MAR	ABR	MAI	JUN	JUL	AGO	SET	OUT	NOV	DEZ	ACUM 2019	% Part
1º) São Paulo	75.016	73.519	74.135	81.814	84.885	75.162	83.794	85.574	81.637	90.477	80.625	84.895	971.508	24,1%
2º) Minas Gerais	40.468	49.069	59.349	62.369	68.689	62.390	59.960	59.302	61.552	62.432	70.568	57.740	713.863	17,7%
3º) Paraná	19.928	16.401	17.148	20.183	20.019	18.009	20.735	21.219	19.976	23.815	21.974	25.653	244.989	6,1%
4º) Rio de Janeiro	17.169	14.752	16.181	18.335	20.279	17.097	19.719	18.773	18.366	19.054	17.373	18.514	215.611	5,3%
5º) Santa Catarina	14.523	14.716	14.679	16.745	16.442	14.936	16.690	17.099	16.423	18.807	17.811	20.922	200.085	5,0%
6º) R S	16.121	13.947	14.101	16.710	16.670	14.676	16.223	15.922	16.231	18.498	16.123	20.835	196.053	4,9%
7º) Bahia	15.338	13.527	12.722	14.412	15.524	12.580	15.493	15.249	14.179	15.648	14.445	15.431	174.537	4,3%
8º) Pernambuco	11.097	10.496	10.292	10.707	11.469	10.416	12.023	11.843	12.068	12.591	12.034	12.526	137.562	3,4%
9º) Goiás	9.857	9.859	9.587	10.277	12.016	11.038	11.328	11.918	10.690	12.068	10.576	12.041	131.246	3,3%
10º) Ceará	9.116	9.201	8.267	10.523	10.568	9.467	11.275	10.966	10.550	12.143	10.488	13.060	125.624	3,1%
Total	303.308	295.905	305.524	339.415	358.456	316.470	349.432	347.084	336.968	367.616	345.382	370.957	4.036.303	100,0%

ESTADO	JAN	FEV	MAR	ABR	MAI	JUN	JUL	AGO	SET	OUT	NOV	DEZ	ACUM 2020	% Part
1º) São Paulo	65.349	77.508	59.048	926	1.558	62.409	80.375	68.895	72.839	76.565	74.918	81.832	722.265	22,8%
2º) Minas Gerais	44.751	49.780	50.671	19.512	16.910	22.917	32.666	43.684	54.545	54.705	58.882	56.815	505.801	16,0%
3º) Paraná	20.327	18.341	13.568	7.622	11.125	13.844	14.816	17.675	19.565	20.736	21.737	24.006	203.352	6,4%
4º) Santa Catarina	14.289	14.408	9.774	8.985	9.836	10.924	14.120	13.826	15.800	17.231	16.682	18.724	164.632	5,2%
5º) R S	14.443	12.481	10.296	6.358	8.102	10.099	11.923	12.619	14.765	15.434	15.312	17.300	149.159	4,7%
6º) Bahia	14.916	11.715	11.079	6.860	5.817	8.037	12.748	13.396	14.900	13.576	15.089	17.178	145.302	4,6%
7º) Rio de Janeiro	18.477	14.353	10.448	1.450	2.368	4.269	11.023	16.832	14.792	17.170	14.406	10.031	135.653	4,3%
8º) Goiás	10.285	11.932	9.351	5.357	7.475	8.286	11.219	11.789	12.680	12.270	12.648	13.717	127.002	4,0%
9º) Pernambuco	11.461	8.335	8.551	1.134	1.860	4.602	11.596	12.415	12.577	11.423	13.154	13.491	110.605	3,5%
10º) Ceará	9.846	8.835	6.768	1.512	2.101	4.572	9.467	10.973	11.760	11.083	10.896	14.221	102.037	3,2%
Total	298.408	293.211	249.392	89.687	100.422	194.345	279.105	299.628	328.221	332.874	334.349	363.163	3.162.851	100,0%

ESTADO	JAN	FEV	MAR	ABR	MAI	JUN	JUL	AGO	SET	OUT	NOV	DEZ	ACUM 2021	% Part
1º) São Paulo	62.470	58.032	63.946	58.784	67.634	63.922	64.868	65.234	61.583	57.939	63.799	69.543	757.718	21,7%
2º) Minas Gerais	35.038	36.902	49.218	42.709	56.122	56.432	48.843	47.335	39.228	48.581	51.741	59.390	571.486	16,3%
3º) Paraná	18.705	16.130	17.931	18.667	19.131	18.653	18.866	19.525	18.353	19.731	19.661	24.289	229.633	6,6%
4º) Rio de Janeiro	27.593	10.834	16.850	16.202	18.106	16.514	17.354	16.513	15.661	14.412	14.863	14.579	196.463	5,7%
5º) Santa Catarina	12.175	12.493	15.208	14.238	14.843	14.262	15.461	14.583	13.613	13.729	14.327	16.724	171.652	4,9%
6º) Bahia	12.048	11.191	11.036	13.590	14.124	13.479	14.149	12.710	13.694	12.097	13.580	15.931	157.611	4,5%
7º) R S	11.824	11.619	11.845	12.916	13.239	12.598	13.354	13.016	12.820	12.416	13.169	15.382	154.191	4,4%
8º) Goiás	9.853	9.533	9.845	13.296	13.088	13.239	13.323	12.976	12.429	11.357	11.154	13.660	143.729	4,1%
9º) Pernambuco	11.890	9.354	6.538	13.578	11.500	11.485	11.469	10.487	10.956	10.767	10.587	11.522	130.154	3,7%
10º) Ceará	9.171	5.873	2.912	11.255	11.346	10.944	10.545	9.619	9.106	7.099	9.455	12.075	109.400	3,1%
Total	274.081	242.066	269.927	288.081	319.244	309.544	309.479	294.068	281.026	276.014	296.191	337.623	2.497.077	100,0%

ESTADO	JAN	FEV	MAR	ABR	MAI	JUN	JUL	AGO	SET	OUT	NOV	DEZ	ACUM 2022	% Part
1º) São Paulo	53.189	45.045	63.358	62.425	84.319	75.315	72.711	80.121	78.503	72.042	78.851	83.640	849.530	23,2%
2º) Minas Gerais	32.742	36.626	41.189	44.235	58.078	54.966	55.363	67.456	61.203	57.452	70.635	61.843	641.764	17,5%
3º) Paraná	14.850	14.001	15.607	15.143	18.337	18.389	17.195	20.414	19.376	20.023	19.863	22.176	215.362	5,9%
4º) Rio de Janeiro	14.609	13.112	13.735	13.986	16.851	15.953	18.751	18.061	16.325	15.767	15.275	17.571	189.990	5,2%
5º) Bahia	11.035	10.712	13.208	12.370	15.274	13.741	1							

